

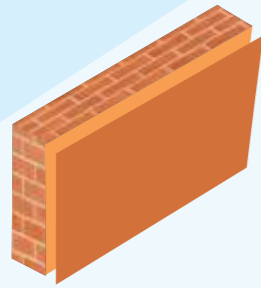
SURFACE PREPARATION

The surface should be dry, clean and free from dirt, grease, algal and fungal growth. New plastered surfaces should be allowed to cure for at least 28 days. Surface imperfection should be removed with the use of cement / sand mix as per directions.



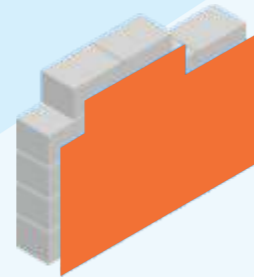
COVERAGE

Approx. 5-6 sq. ft./ kg. per coat depending on the texture and porosity of the surface.



THINNER

0.8 - 1.0 mm depending on the texture and porosity of the surface.



JK Cement Ltd.

Kamla Tower, Kanpur, UP - 208001

Toll-free Number: 1800 203 4555 | Website: www.jkmaxpaints.com

Email Address: consumercare@jkmaxpaints.com



JK MAXIMO Patternz **RockTex**

MARMO GRAND



JK MAXIMO
Patternz RockTex

Marmo Grand
ACRYLIC SYNTHETIC PLASTER WITH SILICONE

MARMO GRAND provides a smooth synthetic plastered surface over the prepared plastered surface. It covers hairline cracks and takes on normal thermal expansions and contractions of the surface effectively. It builds to a very durable exterior and interior finish.



COMPOSITION

It is based on high performance Acrylic Resin with silicone, micro minerals, inorganic pigments, ceramics, quartz, siliceous minerals, special biocides, fungicides, algacides, surfactants etc.



TECHNICAL SPECIFICATION

- a)× Supply & Apply of MARMO GRAND Acrylic Synthetic Plaster over prepared surface in one coat besides primer / sealer should be given on clean wall. Thereafter a coat of MARMO GRAND should be applied with trowel. Apply a top coat of TC-100 A (Acrylic Top Coat) after 24 hours of complete drying for extra protection & gloss.
- b)× The rate shall include all necessary surface preparation, tools, taxes etc. The rates also include all colour shades, texture and pattern as per manufacturer's instructions.

APPLICATION PROCEDURE

- a)× Apply one coat of Polyunder Sealer on the surface to be painted.
- b)× After complete drying of the sealer applied surface (min. 2 hours) apply MARMO GRAND with stainless steel trowel. Spread the material uniformly over the surface & gently smoothen it with special stainless steel trowel to give smooth plastered finish.
- c)× After 24 hours drying, apply one coat of TC-100 A (ACRYLIC TOP COAT) over the surface.



TECHNICAL DATA

PRODUCT BENEFITS/FEATURES



Alkali Resistant



Excellent weather and natural colour resistance



Good flexibility and adhesion



Algae & Fungus Resistance



Breathes out trapped moisture



Water Repellent