

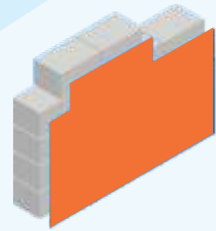
## SURFACE PREPARATION

The surface should be dry clean and free dirt grease algal and fungal growth. New plastered surface should be allowed to cure for at least 28 days. Surface imperfection should be removed with the use of Acro Polyplaster as per directions.



## THINNING

- Can be thinned CORALLE BASE with 2-3% potable water as per requirement.
- No thinner required for application of CORALLE TOP



## PACKING

Available in 25 kg. Sealed Bag/Drum packing.



## PRECAUTION



- Avoid application in temperatures over 40°C and below 5°C and in strong winds. Wash all application equipment with water immediately after use.

### JK Cement Ltd.

Kamla Tower, Kanpur, UP - 208001  
Toll-free Number: 1800 203 4555 | Website: [www.jkmaxxpaints.com](http://www.jkmaxxpaints.com)  
Email Address: [consumercare@jkmaxxpaints.com](mailto:consumercare@jkmaxxpaints.com)



# JK MAJESTA Artiste VOGUE Coral





**JK MAJESTA**  
**Artiste VOGUE**

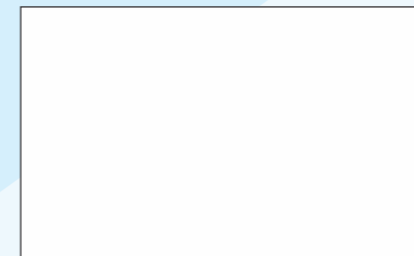
**Coral**  
SILICON ACRYLIC MULTICOLOR GRANITE FINISH

**CORALLE** is a high performance finish to simulate natural rocks. CORALLE provides a permanent stone finish to take on the most adverse climatic conditions. It is environment friendly and water based.



**APPLICATION AREA**

Exterior and interior of cement sand plasters, Stucco, Concrete, Gypsum Boards, Bricks, wood. etc.



**FINISH**

High build granular, multicolor, acrylic aggregate textured (semi rough starry, finish) wall coating by Spray Gun.



**COVERING CAPACITY**

Approx. 3.8 – 4.5 sq. ft. per kg. depending on the porosity of the surface.



**DRYING TIME**

Hard Dry : 12 hours.



**TECHNICAL DATA**

**PRODUCT BENEFITS/FEATURES**



Algae & Fungus Resistance



Water Repellent



Fire Retardant



Bridges Hairline Cracks



Value for Money



UV Resistance

**APPLICATION**

- Acro polyunder coat as Sealer / Primer of required shade
- Apply the CORALLE base of required shade by spray gun.
- After 24 hrs drying spray the CORALLE TOP as bubbles.
- After 12 hrs drying apply one coat of TC 100 A (Acrylic Dirt Resistant Top Coat ) over the surface by brush /roller.

