

## SURFACE PREPARATION

The surface should be dry, clean and free from dirt, grease, algal and fungal growth. New plastered surfaces should be allowed to cure for at least 28 days..



## PACKING

Available in 20 Ltr & 1 Ltr container packing.

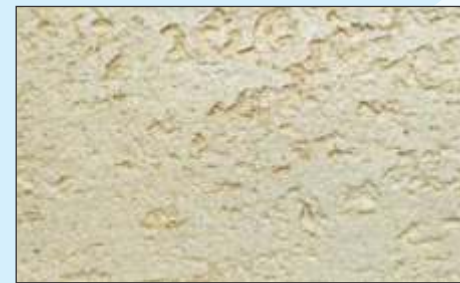


## PRECAUTION



Avoid application in temperature over 40°C and below 5°C and in strong winds. Wash all equipments with water immediately after use

## FINISH



# JK MAJESTA Artiste VOGUE

## Traventino



### JK Cement Ltd.

Kamla Tower, Kanpur, UP - 208001  
Toll-free Number: 1800 203 4555 | Website: [www.jkmaxxpaints.com](http://www.jkmaxxpaints.com)  
Email Address: [consumercare@jkmaxxpaints.com](mailto:consumercare@jkmaxxpaints.com)



**JK MAJESTA**  
**Artiste VOGUE**

**Traventino**  
TUMBLED STONE FINISH

**TRAVENTINO** provides the classical aged look of tumbled stone. It is soft and delicate to look. The soft and earthy hues of this natural stone finish keep it in tune with nature.



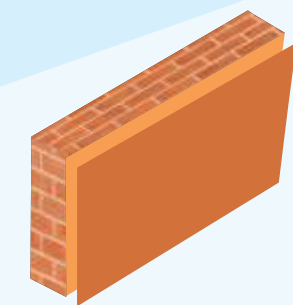
**COMPOSITION**

It is based on high performance Acrylic Resin with silicone, micro minerals, inorganic pigments, ceramics, quartz, siliceous minerals, special biocides, fungicides, algacides, surfactants etc.



**COVERING CAPACITY**

Traventino cover approx. 4-5 sq. ft./ kg. per coat depending on the texture and porosity of the surface.



**TECHNICAL DATA**

**PRODUCT BENEFITS/FEATURES**



Alkali Resistant



Excellent weather and natural colour resistance



Good flexibility and adhesion



Algae & Fungus resistance



Breathes out trapped moisture



Water Repellent

**APPLICATION PROCEDURE**

- Apply one coat of JK Primera Sealer on the surface to be painted.
- After complete drying of the sealer apply TRAVENTINO with trowel. Spread the material uniformly over the surface & make the texture pattern with trowel in 2nd coat.
- After 24 hours drying, apply one coat of ANTICA of required shade by brush /roller and wash it with sponge to make light dark finish.
- Apply a top coat of TC-100 A (Acrylic Top Coat) after 24 hours of complete drying for extra protection & gloss.

