

SURFACE PREPARATION

The surface should be dry, clean and free from dirt, grease, algal and fungal growth. New plastered surfaces should be allowed to cure for at least 28 days.



PACKING

Available in 20 Ltr & 1 Ltr container packing.

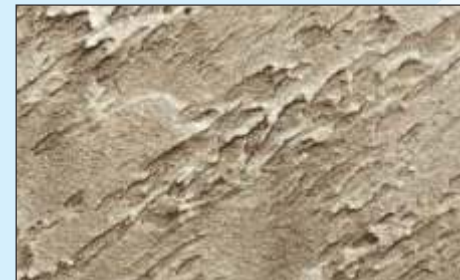


PRECAUTION



Avoid application in temperature over 40°C and below 5°C and in strong winds. Wash all equipments with water immediately after use

FINISH



JK MAJESTA Artiste VOGUE

Mediterrano



JK Cement Ltd.

Kamla Tower, Kanpur, UP - 208001
Toll-free Number: 1800 203 4555 | Website: www.jkmaxxpaints.com
Email Address: consumercare@jkmaxxpaints.com



JK MAJESTA
Artiste VOGUE

Mediterrano
ANTIQUÉ STONE WALL FINISH

MEDITERRANO is must for exterior and interior protection and decoration of all types surfaces like cement sand plasters, stucco, concrete, gypsum, wood etc.



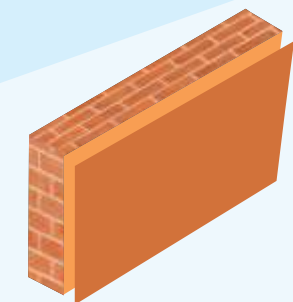
COMPOSITION

It is based on high performance Acrylic Resin with silicone, micro minerals, inorganic pigments, ceramics, quartz, siliceous minerals, special biocides, fungicides, algacides, surfactants etc.



COVERING CAPACITY

Mediterrano cover approx. 4-5 sq. ft./ kg. per coat depending on the texture and porosity of the surface.



TECHNICAL DATA

PRODUCT BENEFITS/FEATURES



Antique Stone Wall Effect



Bridges Hairline Cracks



Thermal expansions and contractions



Exterior and Interior finish



Algae & Fungus Resistance



Prolongs the life of structure

APPLICATION PROCEDURE

- a) Apply one coat of JK Primera Sealer on the surface to be painted.
- b) After complete drying of the sealer apply MEDITERRANO with trowel. Spread the material uniformly over the surface & make the texture pattern with trowel in 2nd coat.
- c) After 24 hours drying, apply one coat of ANTICA of required shade by brush /roller and wash it with sponge to make light dark finish.
- d) Apply a top coat of TC-100 A (Acrylic Top Coat) after 24 hours of complete drying for extra protection & gloss.

