

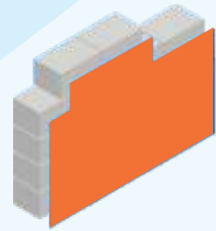
## SURFACE PREPARATION

The surface should be dry clean and free dirt grease algal and fungal growth. New plastered surface should be allowed to cure for at least 28 days. Surface imperfection should be removed with the use of JK WallMaxx Putty as per directions.



## THINNING

Can be thinned with 7-10% potable water as per requirement.



## PACKING

Available in 20 Ltr & 1 Ltr container packing.



## PRECAUTION



Avoid application in temperatures over 40°C and below 5°C and in strong winds. Wash all application equipment with water immediately after use.

## FINISH

Smooth orange peel effect with sponge, wool or stipple rollers.



# JK MAJESTA Artiste VOGUE

## Elastofine



### JK Cement Ltd.

Kamla Tower, Kanpur, UP - 208001

Toll-free Number: 1800 203 4555 | Website: [www.jkmaxxpaints.com](http://www.jkmaxxpaints.com)

Email Address: [consumercare@jkmaxxpaints.com](mailto:consumercare@jkmaxxpaints.com)

**JK MAJESTA**  
**Artiste VOGUE**

**Elastofine**  
SILICON ACRYLIC ROLLER FINISH

**ELASTOFINE** is must for exterior and interior protection and decoration of all types of surfaces like cement sand plasters, gypsum, concrete, wood etc. Roller finish to take on the most adverse climatic conditions .It is environment friendly and water based.



**APPLICATION AREA**

Exterior and interior of cement sand plasters, Stucco, Concrete, Gypsum Boards, Bricks, wood. etc.



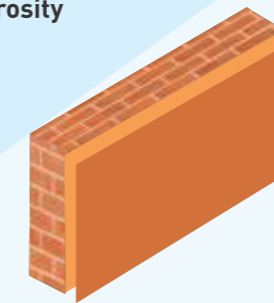
**COMPOSITION**

It is based on high performance Acrylic Resin with silicone, Ceramics, Quartz, Siliceous Minerals, Special Biocides, Fungicides, Algaecides and Surfactants etc. It is also recommended for reviving old buildings.



**COVERING CAPACITY**

Approx. 8-10 sq. ft. per kg per coat. depending on the porosity of the surface.



**DRYING TIME**

Hard Dry : 8 hours.



**TECHNICAL DATA**

**PRODUCT BENEFITS/FEATURES**



Good flexibility and adhesion



Excellent weather and natural colour resistance



Algae & Fungus resistance



Water Repellent



Light-fast UV resistance



Fire Retardant

**APPLICATION**

- JK Primera coat as Sealer / primer
- Apply the ELASTOFINE by brush/wool roller and finishing by stipple or required roller
- After 24 hrs drying apply one coat of TC 100 A (Acrylic Dirt Resistant Top Coat) over the surface by brush /roller.

