

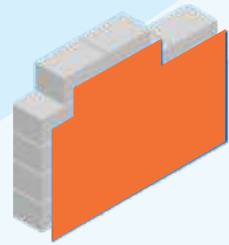
## SURFACE PREPARATION

The surface should be dry clean and free dirt grease algal and fungal growth. New plastered surface should be allowed to cure for at least 28 days. Surface imperfection should be removed with the use of JK WallMaxx Putty as per directions.



## THINNER

Can be thinned with 2-3 % potable water as per requirement.



## PACKING

Available in 20 Ltr & 1 Ltr container packing.

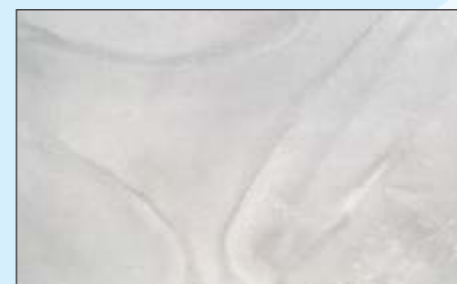


## PRECAUTION



Avoid application in temperatures over 40° C and below 5° C and in strong winds. Wash all application equipment with water immediately after use.

## FINISH



# JK MAJESTA Artiste Crete

Cerotta

### JK Cement Ltd.

Kamla Tower, Kanpur, UP - 208001  
Toll-free Number: 1800 203 4555 | Website: [www.jkmaxxpaints.com](http://www.jkmaxxpaints.com)  
Email Address: [consumercare@jkmaxxpaints.com](mailto:consumercare@jkmaxxpaints.com)



JK **MAJESTA**  
**Artiste<sup>Crete</sup>**

**CEROTTA**  
CONCRETE FINISH

**CEROTTA** provides a classical aged look of tumbled stone. It is soft and delicate to touch. Besides the soft and earthy tone of this natural stone finish, it gives decorative ethnic looks. It is environment friendly and water based.



**APPLICATION AREA**

Exterior and interior of cement sand plasters, Stucco, Concrete, Gypsum Boards, Bricks, Wood, etc.



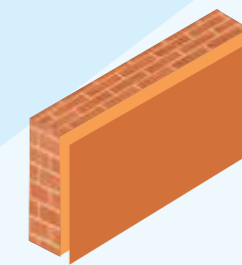
**COMPOSITION**

It is based on high performance Acrylic Resin with silicone, Ceramics, Quartz, Siliceous Minerals, Special Biocides, Fungicides, Algaecides and Surfactants etc. It is also recommended for reviving old buildings.



**COVERING CAPACITY**

Approx. 4-5 sq. ft. per kg. depending on the porosity of the surface.



**DRYING TIME**

Hard Dry: 8 hours.



**TECHNICAL DATA**

**PRODUCT BENEFITS/FEATURES**



Algae & Fungus Resistance



Good flexibility and adhesion



Rock like Finish



Bridges Hairline Cracks



Value for Money



Prolongs the life of the structure

**APPLICATION**

- JK Primera coat as Sealer / primer of required shade.
- Apply the 1st coat of Cerotta of required shade by the trowel as smooth plaster and make the smooth pattern with the help of trowel in 2nd coat.
- After 24 hrs drying apply one coat of TC 100 A (Acrylic Dirt Resistant Top Coat) over the surface by brush /roller.

